



LUMAX

WE DESIGN & PRODUCE QUALITY
ENERGY EFFICIENT LUMINAIRES



Over our more than thirty year history, Lumax Industries has earned a reputation for providing the best quality products and outstanding customer service. For projects of all types and sizes, from retrofits to new construction, you can count on Lumax to deliver every time, on time.

We manufacture standard and custom fluorescent luminaires in our state-of-the-art, 150,000 square foot plant in central Pennsylvania. Knowing how vital it is in developing and producing products for the ultimate in energy efficiency, we are committed to incorporating the latest in proven technologies and materials in every Lumax luminaire.

*Lumax Is
Family Owned
And Operated*





Altoona Mirror

Lumax luminaires are conceived, designed and manufactured using the latest cad/cam equipment, punch presses and hydraulic press brakes, all digitally linked to our Engineering Department. Two electrostatic paint lines quickly provide a durable, wrap-around finish. Our Assembly Department is designed to accommodate standard as well as custom orders with short lead times and our Shipping Department gets orders out quickly and efficiently.

All of these things mean that you benefit from innovative, state-of-the-art product design, top quality manufacturing and appreciative customer service before, during and after the sale.

Each customer's specific needs—from standard to specialty products, small or large runs, product information and capabilities, to quick on-time delivery and follow-through—are as important to us as they are to our customers.

We understand the importance of the right lighting for the right job at the right price, especially when you're looking for energy saving solutions. That's why when it comes to efficient lighting, you can count on Lumax Industries.

***Our Luminaires
Are Union Made
In The USA***

***Our Parts Are
Painted After
Fabrication For
Smooth Edges***

***What Is Often An
"Extra" On Other
Brands, We Include
As "Standard"***

***Specification Grade
Custom Designs***

Designed With Care

Made With Quality

Priced Competitively

Shipped Quickly



Lumax Industries, Inc.
Chestnut Avenue & 4th Street
P.O. Box 991
Altoona, PA 16603
814-944-2537
Fax 814-944-6413

FOR OUR MOST CURRENT CATALOG,
LOG ON TO lumaxlighting.com

LUMAX LUMINAIRES

Surface Mount

Wraparound

Recessed Parabolic

Direct/Indirect

Industrial

Strips/Channels

Task/Wall Bracket

Vandal/Security

Special Application

Emergency/Exit

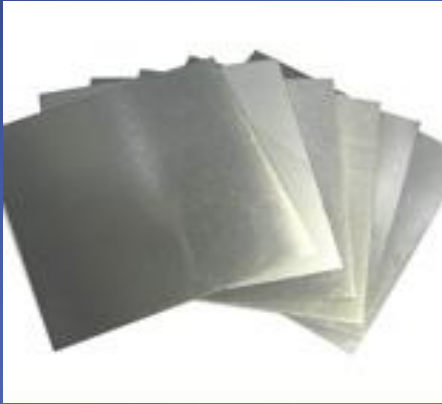




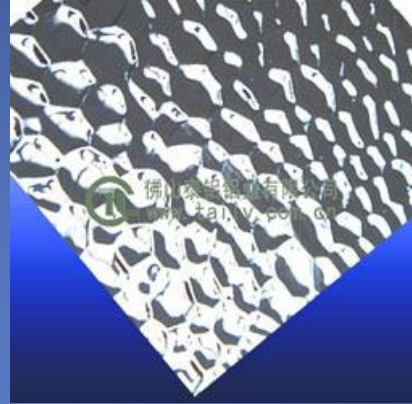
*Select Your Optional Finish
For Looks, For Performance
Choose the Right Material*



Make it Tough, Make it Durable



Painted Aluminum



Hammer Tone
Aluminum



Galvanized Aluminum



Diamond Plate

*Other aluminum pattern options available upon request.
Metals also available starting at 11 gauge.*



Authentic American Manufactured Fixtures Since 1976



Lumax Lighting

Bringing the Colors of Life To Your Life

Choose any RAL solid color and let Lumax do the rest

Ideal for retail, schools, offices.... complementing any interior space



1000 Green Beige	1001 Pale Beige	1002 Sand Yellow	1003 Signal Yellow	1004 Dark Golden Yellow	1005 Honey Yellow	1006 Maize Yellow	1007 Chrome Yellow	1011 Brown Beige
1012 Lemon Yellow	1013 Pearl White	1014 Dark Ivory	1015 Light Ivory	1016 Sulphur Yellow	1017 Saffron Yellow	1018 Zinc Yellow	1019 Grey Beige	1020 Olive Yellow
1021 Cadmium Yellow	1023 Traffic Yellow	1024 Ochre Yellow	1027 Curry Yellow	1028 Mellon Yellow	1032 Broom Yellow	1033 Dahlia Yellow	1034 Pastel Yellow	2000 Yellow Orange
2001 Red Orange	2002 Vermillion	2003 Pastel Orange	2004 Pure Orange	2008 Lt Red Orange	2009 Traffic Orange	2010 Signal Orange	2011 Deep Orange	2012 Salmon Orange
3000 Flame Red	3001 Signal Red	3002 Carmine Red	3003 Ruby Red	3004 Purple Red	3005 Wine Red	3007 Black Red	3009 Oxide Red	3011 Brown Red
3012 Beige Red	3013 Tomato Red	3014 Antique Pink	3015 Light Pink	3016 Coral Red	3017 Rose	3018 Strawberry Red	3020 Traffic Red	3022 Salmon Red
3027 Raspberry Red	3031 Orient Red	4001 Red Lilac	4002 Red Violet	4003 Heather Violet	4004 Claret Violet	4005 Blue Lilac	4006 Traffic Purple	4007 Purple Violet
4008 Signal Violet	4009 Pastel Violet	5000 Violet Blue	5001 Green Blue	5002 Ultramarine Blue	5003 Sapphire Blue	5004 Black Blue	5005 Signal Blue	5007 Brilliant Blue
5008 Grey Blue	5009 Azure Blue	5010 Gentian Blue	5011 Steel Blue	5012 Light Blue	5013 Cobalt Blue	5014 Pigeon Blue	5015 Middle Sky Blue	5017 Traffic Blue
5018 Turkish Blue	5019 Capri Blue	5020 Ocean Blue	5021 Water Blue	5022 Night Blue	5023 Fem Blue	5024 Pastel Blue	6000 Patina Green	6001 Emerald Green
6002 Leaf Green	6003 Olive Green	6004 Blue Green	6009 Fir Green	6010 Grass Green	6011 Reseda Green	6012 Black Green	6013 Reed Green	6014 Yellow Olive
6015 Black Olive	6016 Turquoise Green	6017 May Green	6018 Yellow Green	6019 Pastel Green	6020 Chrome Green	6021 Pale Green	6022 Brown Olive	6024 Traffic Green
6025 Braeken Green	6026 Opal Green	6027 Turkish Green	6028 Pinetree green	6029 Mint Green	6032 Signal Green	6033 Turquoise Blue	6034 Pale Turquoise	7000 Squirrel Grey
7001 Silver Grey	7002 Olive Grey	7003 Moss Grey	7004 Signal Grey	7005 Mouse Grey	7006 Beige Grey	7008 Khaki Grey	7009 Green Grey	7010 Tarpaulin Grey
7011 Iron Grey	7012 Basalt Grey	7013 Brown Grey	7015 Slate Grey	7016 Anthracite Grey	7021 Black Grey	7022 Umber Grey	7023 Concrete Grey	7024 Graphite Grey

THE
Design-Flex
LED COLLECTION

Quality LED Recessed & Surface Mount Luminaires

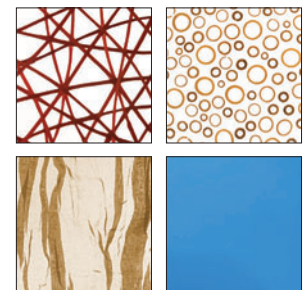
Exceptional Design, Versatility & Performance



LUMAX
LIGHTING

The Exciting And Unique Design-Flex Collection – Now Available Exclusively From Lumax Lighting!

The Design-Flex Collection features exciting architectural elements and exceptional performance. This LED recessed and surface mount collection includes the AFX and AFF Series – the most versatile in the industry – with endless possibilities for totally unique custom design. The exclusive lens selection options allow for lighting to become as much a part of a space's design plan as floor, wall and window coverings are.



Enhance the overall look and feel of any space with our limitless possibilities in lens customization. Accent any décor, enhance any theme, showcase any company, school or team with exciting design options in beautiful film, fabric and other materials.

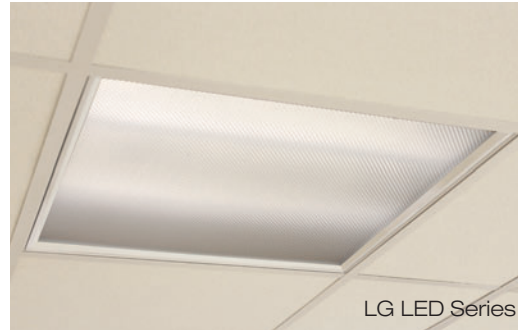
AFX & AFF LED

Outstanding Quality, Exclusive Design Options

Originally fabricated by Lumax Lighting with a proprietary internal reflector design to optimize fluorescent lumen output, the AFX and AFF LED Series are now in demand – not only for outstanding quality and energy efficiency – but also for amazing aesthetic enhancement capabilities for any space.

Both the AFX and the AFF LED are available with standard double frost center lens and single frost side lens with customized design details available from a palette of fabrics, translucent colored lenses, and extraordinary high transmission film with design options that include Triple Wave and TriPyramid. Other options use designer acrylics incorporated with unique recycled and natural elements such as bamboo, grass, fiber, metal and other textures, colors and patterns that create a distinctive multi-dimensional appearance.

AFX and AFF LED fixtures are fabricated with superior structural features. Housing is available in 20-gauge steel body for added durability. Door frames can be selected in cold rolled steel or a regressed extruded aluminum frame for more contour to complement the smooth sight lines that gently integrate the frame with the housing. In contrast to the AFX's pitch side lenses, the AFF LED offers side lenses that lay snugly flat along the same plane as do the center lens.



LDE LED Lyric Series

Full Volume Light Transmission

The Lyric Series has elevated full volume lighting to a new level. The Lyric LDE LED features a deliberately controlled internal light source that uses an optimal reflector to precisely control lumen emission. Light transfers through a highly transmissive lensing choice, including formed faceted acrylic or designer film (available in the popular Triple Wave, Perf or striped patterns) with a 90% plus transmission of light. The LDE Edge has a central peak on the door's exterior frame and facets complement the acrylic lens' shape. These fixtures can be ordered in recessed or surface mount styles in 2x2, 2x4 or 1x4 sizes and painted to complement any interior décor.

LG LED Lensed Grid

Affordable, High Performance

The Lumax Lighting LED Collection now includes standard lensed LG LED recessed fixtures that are perfect for general applications. A selection of LG LED boards and drivers accommodate various light level and energy requirements. For added durability, the LG LED is available in 20-gauge cold rolled steel housing.

The LG LED is considered the best economical choice in lighting for schools, offices, retail space, restaurants and other commercial or institutional uses.



GL LED Graphic Lensed Luminaire

Visually Appealing Graphic Lens Options

The Graphic Lensed LED is designed to create a pleasant scenic effect with images from nature and the outdoors. It is a great choice for enhancing doctors' and dentists' offices, health care facilities or any space where anxiety and stress reduction is helpful.



Each luminaire is fabricated at the Lumax Lighting plant in Altoona, Pennsylvania, from metals or aluminum of U.S. origin, typically from mills in Pennsylvania and Ohio. Care is taken to procure other parts and paint from nearby suppliers to reduce environmental impact and produce the most eco-friendly fixture possible.

APPLICATION	CONSTRUCTION	ELECTRICAL
<p>AFX LED & AFF LED</p> <p>Offices, hospitals, healthcare, dining, schools, retail, convenience stores, lobbies, corridors, conference spaces.</p>	<ul style="list-style-type: none"> • Die form code gauge cold rolled steel, available in 20-gauge • Static and heat removal models available • Wide selection of shielding and lens media • Integrated EQ clips • Access plates for easy power connection • Door frames available in steel or regressed aluminum • Gaskets to prevent light leakage 	<ul style="list-style-type: none"> • High efficiency constant current LED driver operates LED's at 350 MA for cool long life operation • Mid power LED boards available in 3500k, 4000k and 5000k • Smooth even illumination with 50,000 hrs. L70 service life • Led boards are individually replaceable • Driver quick disconnect is standard • ETL listed • IBEW labeled • 5 year limited warranty on LED boards and drivers
<p>LDE LED</p> <p>For offices, lobbies, corridors, schools, hospitals and other healthcare facilities. 80+ CRI LED light source provides excellent color rendering.</p>	<ul style="list-style-type: none"> • USA milled die-formed housing exceeds code gauge • Full body swing down door frame, available in steel or regressed aluminum • Low glare faceted acrylic lens or highly transmissive film lens options with clear acrylic • Integrated EQ clips • Access plates for easy power connection • Gaskets to prevent light leakage 	<ul style="list-style-type: none"> • High efficiency constant current LED driver operates LED's at 350 MA for cool long life operation • Mid power LED boards available in 3500k, 4000k and 5000k • Smooth even illumination with 50,000 hrs. L70 service life • Led boards are individually replaceable • Driver quick disconnect is standard • ETL listed • IBEW labeled • 5 year limited warranty on LED boards and drivers
<p>LG LED</p> <p>Good flexibility and economy for commercial, retail, institutional lighting and other general purpose lighting.</p>	<ul style="list-style-type: none"> • Die form code gauge cold rolled steel, available in 20-gauge • Static and heat removal models available • Wide selection of shielding and lens media • Integrated EQ clips • Access plates for easy power connection • Door frames available in steel or regressed aluminum • Gaskets to prevent light leakage 	<ul style="list-style-type: none"> • High efficiency constant current LED driver operates LED's at 350 MA for cool long life operation • Mid power LED boards available in 3500k, 4000k and 5000k • Smooth even illumination with 50,000 hrs. L70 service life • Led boards are individually replaceable • Driver quick disconnect is standard • ETL listed • IBEW labeled • 5 year limited warranty on LED boards and drivers
<p>GL LED</p> <p>Outstanding flexibility with wide selection of scenes to choose from, including sky images like clouds and sea images like coral reef. Great for medical, healthcare, retail and institutional applications.</p>	<ul style="list-style-type: none"> • High quality acrylic graphic panel installed in door frame • Die form code gauge cold rolled steel, available in 20-gauge • Static and heat removal models available • Wide selection of shielding and lens media • Integrated EQ clips • Access plates for easy power connection • Door frames available in steel or regressed aluminum • Gaskets to prevent light leakage 	<ul style="list-style-type: none"> • High efficiency constant current LED driver operates LED's at 350 MA for cool long life operation • Mid power LED boards available in 3500k, 4000k and 5000k • Smooth even illumination with 50,000 hrs. L70 service life • Led boards are individually replaceable • Driver quick disconnect is standard • ETL listed • IBEW labeled • 5 year limited warranty on LED boards and drivers



Chestnut Avenue & 4th Street
 P.O. Box 991
 Altoona, PA 16603
 814-944-2537 • Fax 814-944-6413
lumaxlighting.com

Designer Collection

Distinctive Direct / Indirect Luminaires



Shown Here: Tan Scroll (TS) fabric pattern and bronze painted aluminum door frame

*It's Time To Change Your Basket
And Let The Light Shine Through*

LUMAX
LIGHTING

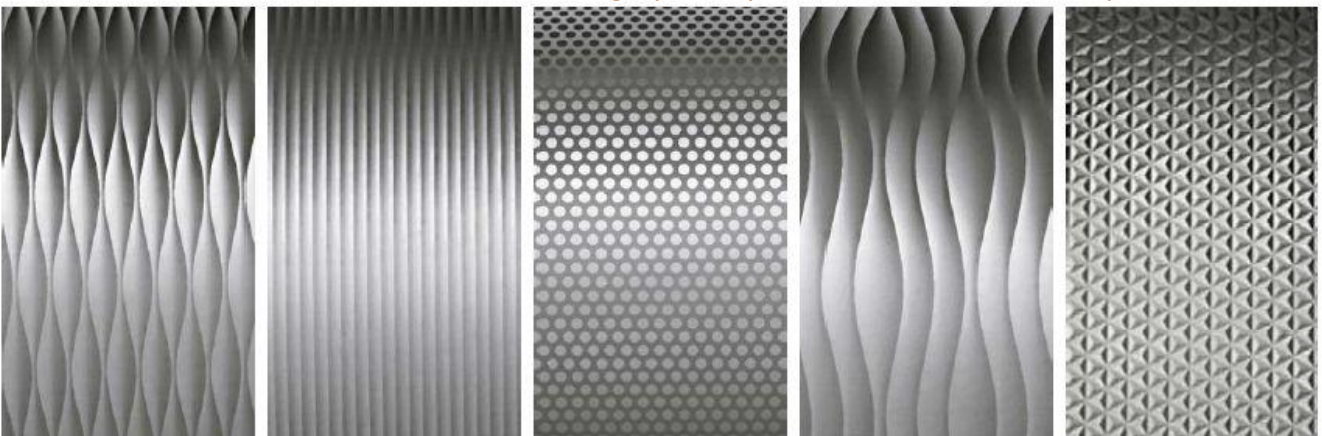


ID and DID Series Designer Collection: LENS BASKET OPTIONS:

- MN - Mango leaf patterns with off white background (2x2 only)
- BR - Banana leaf patterns with red background (2x2 only)
- BB - Banana leaf patterns with blue background (2x2 only)
- WL - White linen cloth stretched thinly over white acrylic overlay (2x2 only)
- WW - Whimsy white, circular pattern white cloth over white acrylic (2x2 only)
- WC - White grid cloth pattern over white acrylic (2x2 only)
- RT - Raintree pattern over white acrylic overlay (2x2 only)
- RV-River pattern over white acrylic overlay (2x2 only)
- SU - Unbria Slate pattern over white acrylic overlay (2x2 only)
- RU - Russell fabric over white acrylic overlay (2x2 only)
- TS – Tan Scroll pattern over white acrylic overlay (2x2 only)
- TW - Triple Wave pattern on clear UV PET (90% Transmission)
- SP - Striped Pattern on clear UV PET (90% Transmission)
- PY - Triple Pyramid, Pyramid pattern on clear UV PET (90% Transmission)
- PF - Perforated pattern on clear UV PET (90% Transmission)
- WV – Wave pattern on clear UV PET (90% Transmission)

Stock Patterns UV PET film shown as greyscale for enhanced visual contrast.

Actual film is clear, highly transparent with excellent lamp obscuration



Wave

Stripe

Perf

Triple Wave

Tri Pyramid

Designer Collection

Direct/Indirect Luminaires

For Lumax ID and DID Series

Add style, color and efficiency to your indirect basket type fixtures and let the light shine through ...



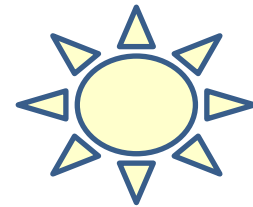
Whimsy
White (WW)



Tan Scroll (TS)



Triple Wave (TW)
UV PET Film



- Direct/Indirect distribution of soft light creates superior brightness control and balanced light.
- Great for hospitals and health care facilities to provide visual comfort for those people who look directly at the ceiling.
- A wide variety of designer looks to complement the interior design.

Applications:

Offices
Hospitals
Health care
Retail spaces
Conference rooms
Lobbies
Corridors
Schools
Libraries

up to 93.9% efficient with White Optic reflector

Designer Collection

*Let the Light Shine,
Let The Light Shine Through!*



Shown Here: Drop Indirect DID Series with "River" fabric pattern

LUMAX
LIGHTING

301 Chestnut Avenue
Altoona, Pennsylvania

www.lumaxlighting.com

Designing and Producing Quality Luminaires Since 1976